

# THE KAIĀRAHI PROGRAMME

2018-2019



**Whānau Ora**  
COMMISSIONING AGENCY

The Kaiārahi Programme engaged with a total of 4,933 whānau across Te Ika a Māui (North Island) during the 2018/19 financial year (1st July 2018 to 30th June 2019). The Kaiārahi Programme supported whānau to develop plans, set goals and achieve some of their intended short-to-medium term outcomes, through navigation and connection of whānau to relevant services and resources. This infographic provides a brief summary of the outcomes achieved by outcome domain and area across Te Ika a Māui, and within each of the six Whānau Ora Commissioning Agency regions (Te Tai Tokerau, Tāmaki Makaurau, Hauraki-Waikato, Waiariki, Te Tai Hauāuru and Ikaroa-Rāwhiti).

## TE IKA A MĀUI (NORTH ISLAND)

**SIX** REGIONS **4,933** whānau engaged  
**5,797** outcomes achieved

- TE TAI TOKERAU  
Whānau Engaged: 894  
852 Outcomes Achieved
- TĀMAKI MAKĀURAU  
Whānau Engaged: 763  
703 Outcomes Achieved
- HAURAKI-WAIKATO  
Whānau Engaged: 707  
1,089 Outcomes Achieved
- WAIARIKI  
Whānau Engaged: 1,051  
1,224 Outcomes Achieved
- TE TAI HAUĀURU  
Whānau Engaged: 551  
644 Outcomes Achieved
- IKAROA-RĀWHITI  
Whānau Engaged: 967  
1,285 Outcomes Achieved



## OUTCOME DOMAINS

Whānau Standards of Living



32%

Whānau Health



22%

Whānau Participation in the Community



11%

Whānau Knowledge



19%

Whānau Relationships



9%

Whānau Engagement in Te Ao Māori



7%

## TOP 5 OUTCOME AREAS

### TE IKA A MĀUI

- Education or training 10%
- Physical or personal health 7%
- Basic household items, amenities or clothing 7%
- Home ownership or housing 6%
- Access to community resources 6%

## DEMOGRAPHICS OF WHĀNAU MEMBERS

**14,229**  
Individuals

**39%**  
17 Years & Under

**56%**  
Female

**84%**  
Māori

**6%**  
Pacific

**5%**  
Pākehā

The following illustrates outcomes achieved in each region by outcome domains and the top 5 outcome areas.

Whānau Standards of Living



Whānau Health



Whānau Participation in the Community



Whānau Knowledge



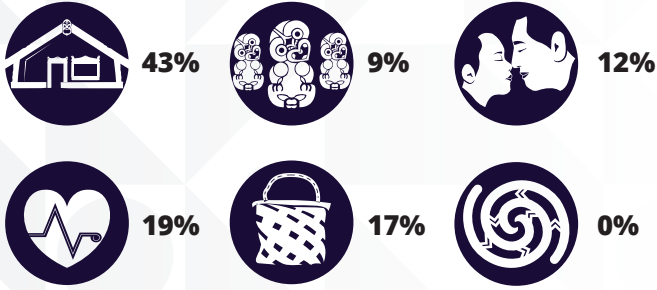
Whānau Relationships



Whānau Engagement in Te Ao Māori



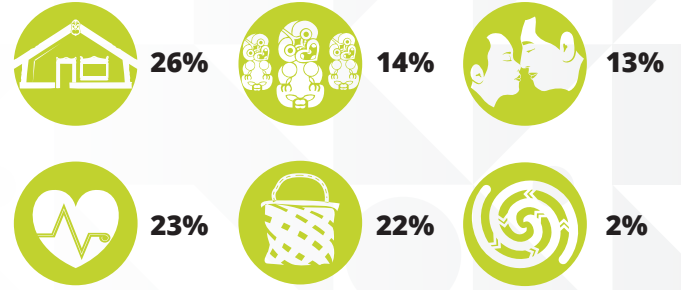
## TE TAI TOKERAU



### TOP 5 OUTCOME AREAS

- Home ownership or housing 10%
- Education or training 9%
- Basic household items, amenities or clothing 8%
- Physical or personal health 7%
- Housing standards including household maintenance 6%

## TĀMAKI MAKAURAU



### TOP 5 OUTCOME AREAS

- Education or training 9%
- Financial literacy or budgeting 9%
- Home ownership or housing 9%
- Parenting knowledge or skills 9%
- Physical or personal health 6%

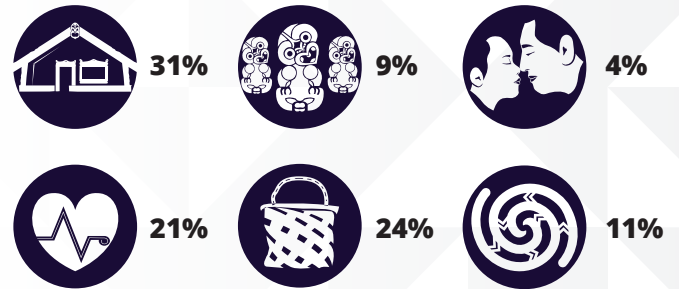
## HAURAKI-WAIKATO



### TOP 5 OUTCOME AREAS

- Basic household items, amenities or clothing 12%
- Physical or personal health 11%
- Housing standards including household maintenance 10%
- Access to community resources 8%
- Financial literacy or budgeting 8%

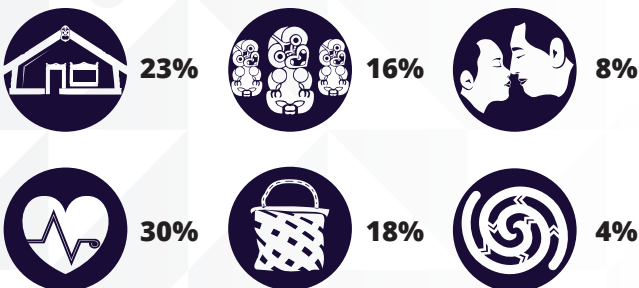
## WAIARIKI



### TOP 5 OUTCOME AREAS

- Education or training 16%
- Physical or personal health 7%
- Housing standards including household maintenance 7%
- Whakapapa or whānau connections 6%
- Mental health 6%

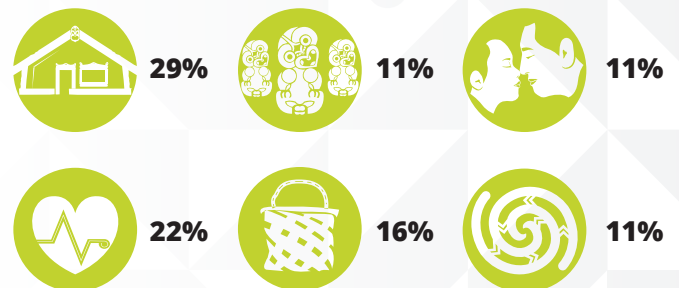
## TE TAI HAUĀURU



### TOP 5 OUTCOME AREAS

- Education or training 12%
- Whānau or social health 11%
- Access to community resources 9%
- Home ownership or housing 7%
- Physical or personal health 7%

## IKAROA-RĀWHITI



### TOP 5 OUTCOME AREAS

- Basic household items, amenities or clothing 9%
- Education or training 9%
- Whānau or social health 7%
- Whakapapa or whānau connections 6%
- Physical or personal health 6%