

WHĀNAU DIRECT

2018-2019

The Whānau Direct programme enhances whānau access to good and services to meet their immediate needs. The Whānau Direct programme offers annual tailored investments of up to \$1,000 in value per whānau. This infographic provides a brief summary of the immediate outcomes achieved by whānau who received a Whānau Direct grant from 1 July 2018 to 30 June 2019. Whānau outcomes are presented by broad outcomes domains and as well as specific outcomes achieved across Te Ika a Māui (North Island) and within each of the six regions - Te Tai Tokerau, Tāmaki Makaurau, Hauraki-Waikato, Waiariki, Te Tai Hauāuru and Ikaroa-Rāwhiti.

TE IKA A MĀUI (NORTH ISLAND)

SIX REGIONS **3,053** applications
7,186 outcomes achieved

- TE TAI TOKERAU
18% Applications | 1,367 Outcomes
- TĀMAKI MAKAUURAU
15% Applications | 1,224 Outcomes
- HAURAKI-WAIKATO
14% Applications | 1,191 Outcomes
- WAIARIKI
16% Applications | 970 Outcomes
- TE TAI HAUĀURU
19% Applications | 1,362 Outcomes
- IKAROA-RĀWHITI
18% Applications | 1,072 Outcomes



OUTCOME DOMAINS

Whānau Standards of Living



48%

Whānau Health



26%

Whānau Participation in the Community



11%

Whānau Knowledge



10%

Whānau Relationships



3%

Whānau Engagement in Te Ao Māori



1%

TOP 5 WHĀNAU OUTCOMES

TE IKA A MĀUI

- Improved management of physical or personal health (18%)
- Increased access to basic furnishings or amenities (17%)
- Increased access to better housing standards (11%)
- Improved access to safe transport options (9%)
- Improved whānau household income (5%)

DEMOGRAPHICS OF APPLICANTS

70%
25 - 64 years of age

74%
Female

59%
Unemployed

20%
Employed

83%
Māori

7% Pākehā **5%** Pacific

92%
Household income of \$40,000 or less

The following illustrates outcomes achieved in each region by outcome domains and the top 5 whānau outcomes

Whānau Standards of Living



Whānau Health



Whānau Participation in the Community



Whānau Knowledge



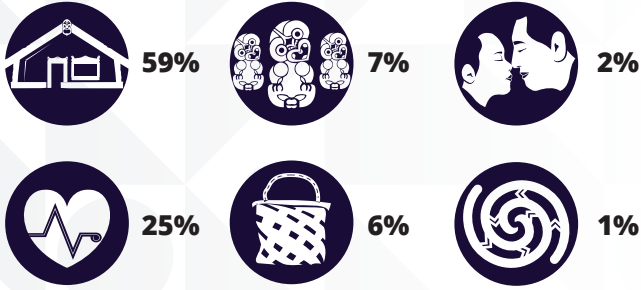
Whānau Relationships



Whānau Engagement in Te Ao Māori



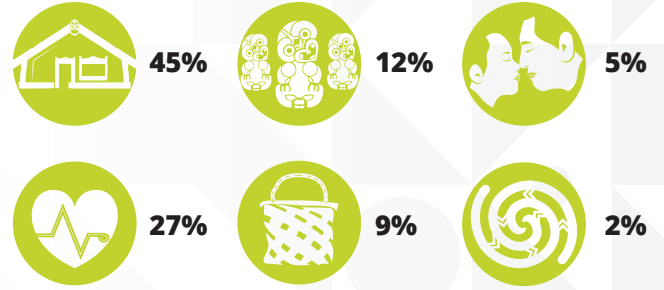
TE TAI TOKERAU



TOP WHĀNAU OUTCOMES

- Basic furnishings or amenities (20%)
- Housing standards including household maintenance (18%)
- Physical or personal health (15%)
- Safe transport options (9%)
- Whānau household income (7%)

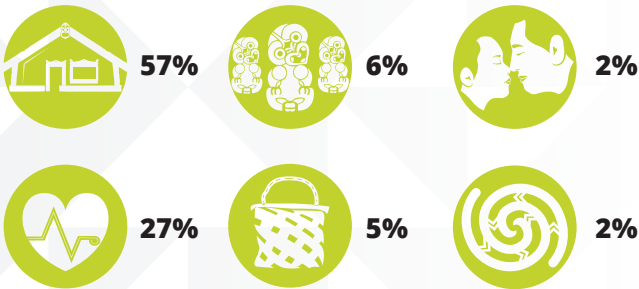
TĀMAKI MAKAURAU



TOP WHĀNAU OUTCOMES

- Physical or personal health (16%)
- Safe transport options (13%)
- Basic furnishings or amenities (11%)
- Housing standards including household maintenance (9%)
- Whānau household income (8%)

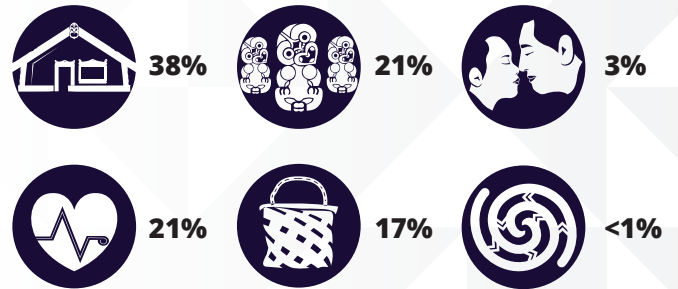
HAURAKI-WAIKATO



TOP WHĀNAU OUTCOMES

- Basic furnishings or amenities (32%)
- Physical or personal health (22%)
- Housing standards including household maintenance (11%)
- Improved access to safe transport options (7%)
- Whānau household income (4%)

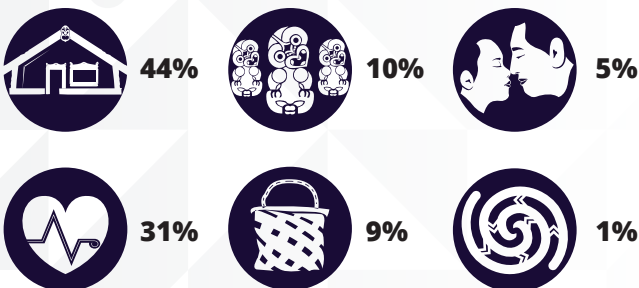
WAIARIKI



TOP WHĀNAU OUTCOMES

- Physical or personal health (16%)
- Financial literacy or budgeting (12%)
- Basic furnishings or amenities (10%)
- Housing standards including household maintenance (10%)
- Education or training (6%)

TE TAI HAUĀURU



TOP WHĀNAU OUTCOMES

- Physical or personal health (21%)
- Basic furnishings or amenities (13%)
- Housing standards including household maintenance (9%)
- Safe transport options (7%)
- Whānau household income (6%)

IKAROA-RĀWHITI



TOP WHĀNAU OUTCOMES

- Physical or personal health (19%)
- Basic furnishings or amenities (17%)
- Housing standards including household maintenance (11%)
- Safe transport options (8%)
- Knowledge and skills for employment (6%)